

GW316-MGF Multi Grip Stainless Steel 316 Threaded Insert

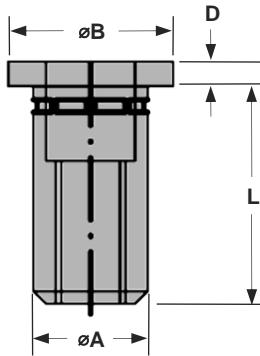
Stainless steel 316 · Large flange · Round · Open end · Multi-grip
M5 - M8

Features

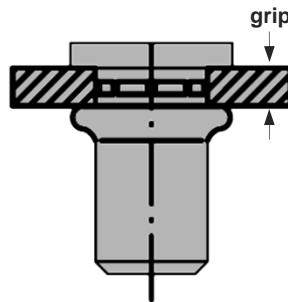
- Multi-grip capability accommodates wide variations in material thickness
- Large drilling hole tolerance
- Can be used for very thin sheet materials from 0.25 mm
- Large flange head provides a load bearing surface and reinforces the hole to prevent push-out

Material

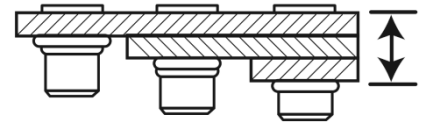
- Stainless steel 316, polished



Before Placement



After Placement



Multi grip capability allows replacement of many standard blind rivets with just one fastener

Part No.	Thread Size	Grip Range		Hole Size	øA	øB	D	L
		min.	max.					
GW316-MGFM5-02550	M5	0.25	5.0	7.1	7.0	10.0	1.0	13.5
GW316-MGFM6-0560	M6	0.5	6.0	9.1	9.0	12.0	1.5	18.0
GW316-MGFM8-0565	M8	0.5	6.5	11.1	11.0	14.0	1.5	20.0

Thread Size	Tightening torque	Thread breaking force	Shear strength
	Nm max.	kN	kN
M5	14.0	15.0	3.2
M6	27.0	> 25.0	5.75
M8	40.0	> 30.0	7.6



Can't find what you are looking for?

We can provide unique and customized solutions.
Contact your nearest [Gripwell](#) team for assistance!